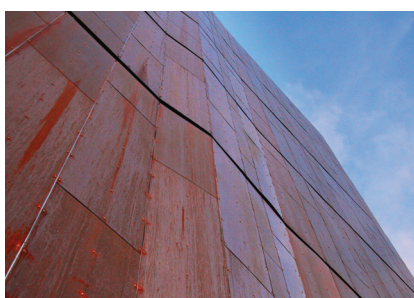


Choose copper to create sensational, lively perspectives in façade cladding and roof design



As an alternative to architectural steel, consider a new addition to the popular TECU® product range: an interesting reddish-brown copper surface finish resembling 'weathered steel', with all the positive features associated with copper, like outstanding flexibility, long-term durability and ease of use.

We call this latest innovation from TECU® range, Copper I and Copper II.

Made from 100% recycled copper, it reduces CO² emissions and saves energy, making it an ideal modern 'green' building material.

For a sensational new option in façade cladding and roof design, look no further than Copper I and Copper II – the optimum in natural surface finishes.

TECU® Iron is available in two variants: TECU® Iron 1 (Copper 1) and TECU® Iron 2 (Copper II), making it possible for architects and designers to create lively perspectives in façade cladding and roof design.

The only difference between the two options is the vividness of the surface finish. Copper 1 and Copper II are available in board up to a size of 1000 x 3000mm and also as the composite material, TECU® Bond_iron.

Product Range

Sheet Formats / Thickness	0.6	0.7	1.0	1.2	1.5	2.0	4.0*
600x3000	o	x	o				
670x3000	x	x	o				
1000x2000	x	x	o	o	o	o	
1000x3000	x	x	o	o	o	x	o

x = on request >160sqm | o = on request > 3000kg | * = as TECU® Bond

TECU® is highly-rated worldwide as a durable, quality product range, perfectly suited to the creativity of edgy, modern architecture.



TECU® Iron One



TECU® Iron Two



Please note that due to printing processes the colours of these samples may differ from the real product.

Interested in this product?

Contact us to make an appointment with our representative to discuss your next project needs.

Contact Bruce Gibson

Mobile 021 578 739

Phone 0800 50 2004

Email info@trayroofing.co.nz

Web trayroofing.co.nz

